



**Highgene**<sup>TM</sup>  
Water Purifier

**HWP-1**



# USER MANUAL WATERTEC ENABLED

**RETAINS ALL NATURAL MINERALS,  
PROTECTS FROM WATER BORNE DISEASES  
REDUCES HARMFUL HEAVY METALS FROM SOURCE WATER**

**NO** **ELECTRICITY**  
**WATER WASTAGE**  
**MINERAL LOSS**



CLEAN & SAFE DRINKING WATER FREE OF  
SEDIMENTS, BACTERIA & MOST POLLUTANT  
DESIGNED, DEVELOPED & MANUFACTURED

# USER MANUAL

Highgene Water Purifier HWP1 is recommended for purification of drinking water with normal TDS ( Total Dissolved Solids ) less than 500ppm.

Generally surface water from Rivers and Lakes, Open well water and Municipality treated water is a good source of drinking water and comes with normal TDS of less than 500ppm

Even though the water has normal TDS, the water may be contaminated with invisible disease causing microorganisms due to water storage and water distribution systems, piping etc.

The other contaminants in surface waters are mud (sediments), high residual chlorine contents ( >0.2ppm ), chlorination by-products and many other organic contaminants.

HWP1 Purifier is designed to purify your water by using state of the art **Ultrafiltration Technology** with additional Sediment and Activated Carbon Filters.

## PURIFICATION STAGES

1

### Yarn Wound Sediment Filter

with High Dust Holding Capacity which captures sediment particle more than 5 microns in size.

2

### Activated Carbon Block ( CTO )

which helps in removing unwanted Colour, Bad taste and odour in water and also reduce Harmful Heavy Metal, chlorine & chlorination by-products to bring it within drinking water specifications.

3

### Ultra filtration

Helps in removing disease causing microorganisms in water and makes it safe for drinking purpose.

The pathogenic microorganisms reduction is 99.999% as per test reports from reputed Laboratory.

## “ADVANTAGES”

HWP1 is an ideal solution for water purification of input water with less than 500ppm TDS

HWP1 is Non-Electric Device. No electricity is required

This can be Installed at a convenient place where input water tap is available.

HWP1 is compact in design having option of tabletop or wall mounting.  
This occupies less space.

Retains essential minerals.

No wastage of water.

Produces crystal clear & microbiologically safe drinking water

## “LIMITATIONS”

HWP1 Purifier is not meant for reducing the total dissolved solids in water ( TDS ).

HWP1 is not recommended for High TDS ( >500ppm )

- Keep the purifier in clean condition
- Back wash the filters when flow reduces
- Replace the filters every year



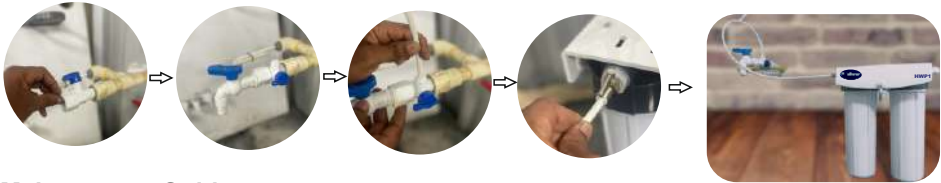
- Don't use high TDS water for purification
- Do not expose the purifier to sun light
- Do not use hot water for feed  
(avoid connecting to geyser point)

## Installation Guide:

1. Select a location where you have water supply at home, and want to use purified water for drinking purpose.
2. Stop main water supply before starting the installation process for easy installation of diverter valve.  
This valve used for drawing the water connection to purifier.
3. For Wall Mounting, use the DIY Tools given along with this purifier.  
Make 2 holes with spacing of 7.5CM. Mount the purifier at confirmable position to operate **ON/OFF** knob.
4. Connect 1/4" one end of pipe by quick fix method to diverter valve, other end to purifier input quick fix.
5. Resume the main water supply and switch on the ON/OFF knob in the water purifier.  
Ensure the connections are in order and ensure no leakages.  
Now, HWP1 is ready to give you safe clean drinking water

For better efficiency of purification, the recommended water flow rate is 1 LPM ( litre per minute).  
To adjust 1 LPM Flow rate, please follow the following steps.

- 1) Turn on the water.
- 2) Measure how much time it takes to fill a container of 1 litre capacity using your stopwatch (in seconds).
- 3) Adjust the flow rate by using the diverter valve knob to ensure 1 litre container gets filled in 60 seconds.



## Maintenance Guide:

Proper maintenance is important to keep your water purifier working effectively and to ensure that the water you are drinking is Clean and Safe Water. Here are some general maintenance tips for your water Purifier.

Replace the purifier cartridge: Over a period of time depending on the input water quality, the purifier Output flow rate will reduce because of blockage of filter cartridge.  
This needs to be cleaned or replaced for effective purification.

All the filters and ultrafilter cartridge should be replaced once a year or after 6000 litres, whichever is earlier, for optimal performance.

Washing or replacing the cartridge is a simple process that involves unclamping the housing using the bigger spanner given with the kit.

Wash or replace the cartridges by rotating anti-clockwise direction.

Use company genuine spare parts and consumables only to ensure you get safe water for your health and well being.  
You can always reach out for help or service.



Inlet diverter valve



Spanner Black



1/4" Pipe Tube (0.6m)



**Depth Filtration Technologies Pvt Ltd.**  
Plot No - 9/1, Jigani Industrial  
Area, Phase - 1, Anekal Taluk,  
Bangalore - 560 105.

For Customer Care Enquiries:-  
Phone : 080-29633011  
Email id : care@highgene.co.in